



# Deployment Guide

Armor Screen Corporation  
2001-A North Congress Avenue  
Riviera Beach, FL 33404  
(561) 841-8890

[www.armorscreen.com](http://www.armorscreen.com)

## Table of Contents

Clip Systems .....	1
Removing Caps .....	2
Installing Hooks .....	2-3
Threading Buckles & Straps .....	4
Attaching & Releasing Buckles .....	5

Read the next two pages no matter  
which system you have!

Tightening Straps .....	6
Locking Buckles .....	7

## Armor Screen Deployment Guide

### The Clip System



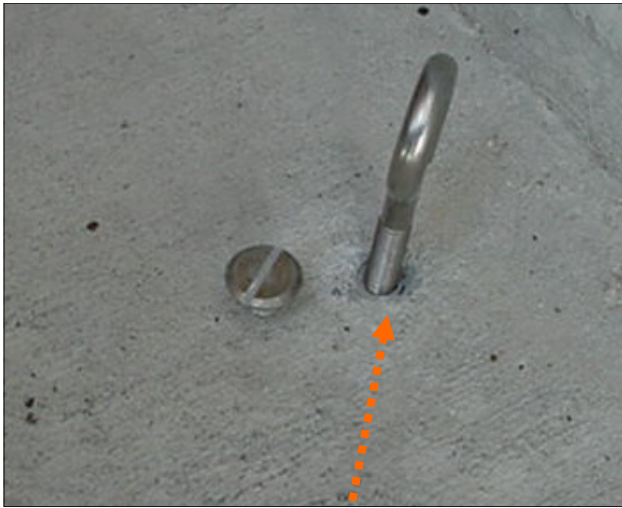
To attach the screen just slide the clip over the carriage head bolts and snug down the strap. If your system has the bolts screwed in flush with the surface, unscrew the bolt about 1/8" then slide the clips on.

If your system has the bolt removed and the inserts secured with covers, remove the covers and install the carriage head bolts. Screw down to within 1/8" of the surface. Slide the clip over the bolt and snug down the strap.

**See the page on tightening straps and locking buckles to ensure your system performs to specification.**



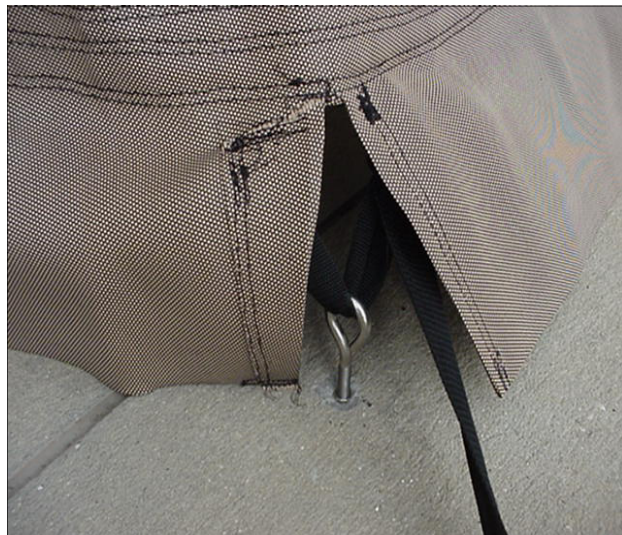
## Armor Screen Deployment Guide



### Removing Stainless Steel Caps & Installing Hooks

A spade drill bit is turned into an effective tool by grinding a flat surface on the end. It is supplied and stored with your hardware to use with a portable drill.

Remove caps, install hooks & attach straps.



# Armor Screen Deployment Guide



## Armor Screen Deployment Guide

### Threading the Buckles & Straps



The strap enters the buckle from the back into the top slot. It then continues down the front of the buckle and into the bottom slot.



## Armor Screen Deployment Guide



### Attaching Bottom Buckles

The buckles on the bottom of screens are deployed by looping the strap through the eye bolt, up behind the buckle, through the top slot from behind, the down through the bottom slot from the front side. The straps may be easily tightened by holding the strap and stepping on it as shown below.



### Releasing Bottom Buckles and Straps

Armor Screen's unique buckle is specifically designed to hold and not release under wet and cycling wind loads.

To release the tension on the buckle and strap, simply give a slight tug on the buckle similar to releasing a safety belt on an airplane seat.



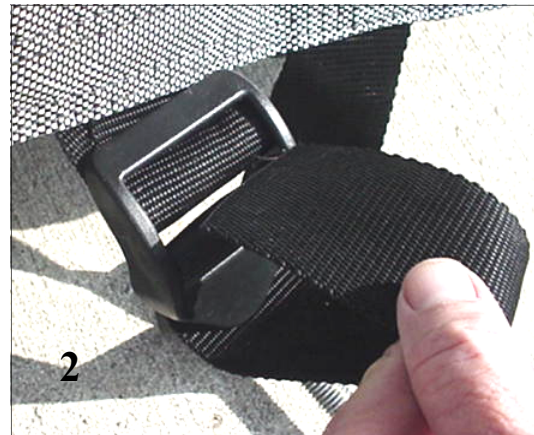
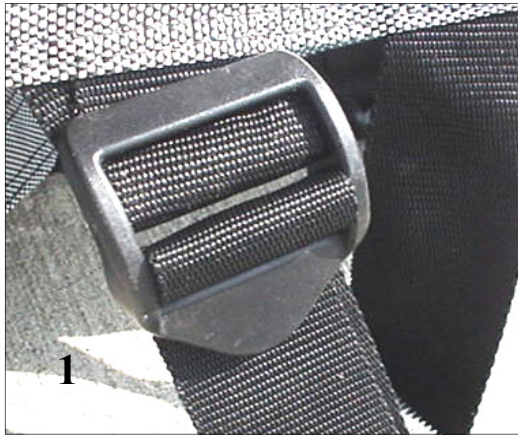
## Armor Screen Deployment Guide

### Tightening Straps



## Armor Screen Deployment Guide

### Locking the Buckle



1. Tighten the buckle and strap securely.
2. Lift the tail end of the strap up and bend it so it will go back down the top slot in the buckle.
3. The strap should look like this as it goes through the buckle
4. Pull the strap down securely from in back of the buckle so that it is tight and looks like this picture. You are done.

**It is extremely important to lock the buckle like this.  
High pulsating winds will loosen unlocked buckles!**

